

MOD TW100



Light Efficiency:

31 Lumen/Watt

Light Quality:

CRI: 94.5

Color Temperature:

5755 K

Output: 954 lm

Peak: 3047 cd

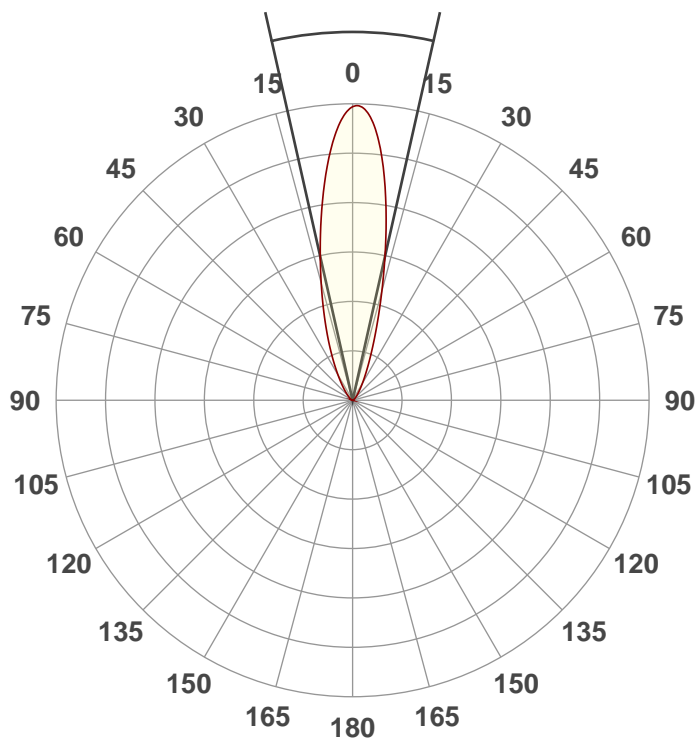
Power: 30.8 W

PF: 0.61



Beam Angle

25.4°



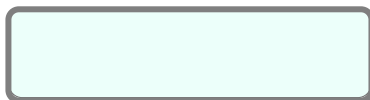
Test:

40Deg CW

Date:

11/26/2018

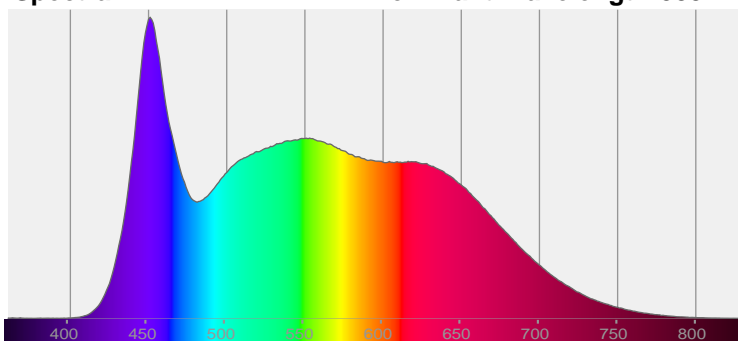
Note:



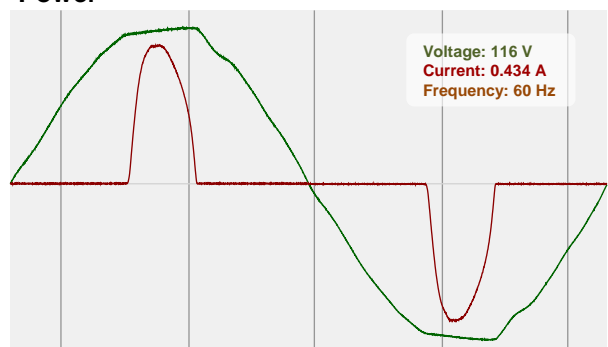
CIE 1931
x: 0.327
y: 0.338

Spectra

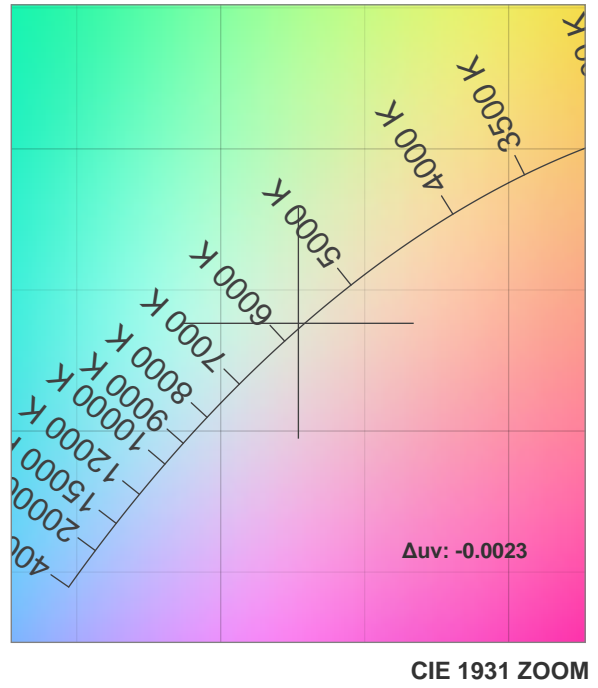
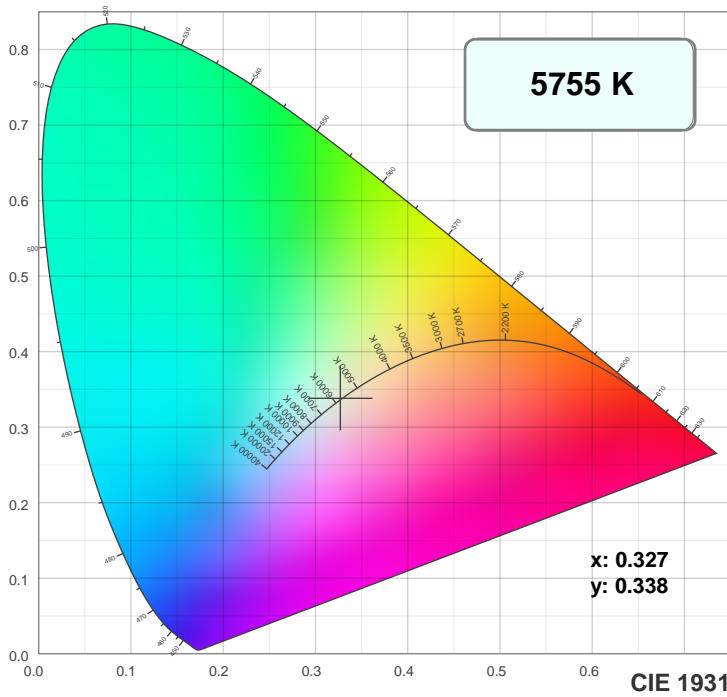
Dominant Wavelength: 583nm



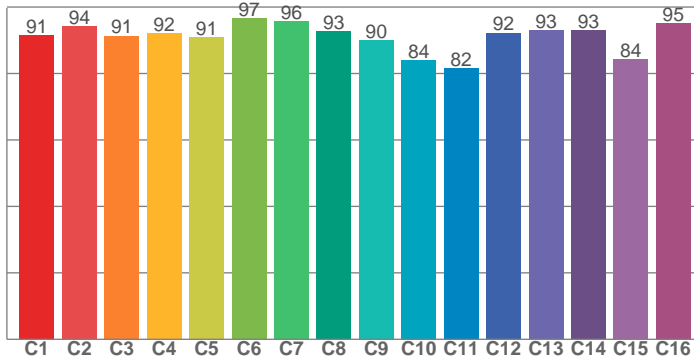
Power



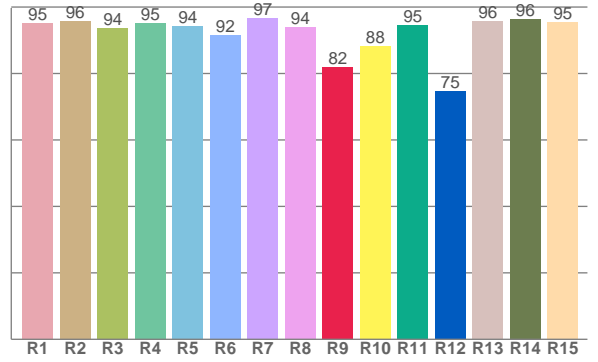
Color Details



TM30: 90.9



CRI: 94.5 (R1-R8)



CRI R values, only R1-R8 are used to calculate final CRI value

R1	R2	R3	R4	R5	R6	R7	R8	R9	R10	R11	R12	R13	R14	R15
95.2	95.7	93.6	95.1	94.3	91.5	96.6	93.8	81.9	88.2	94.5	74.5	95.7	96.3	95.4

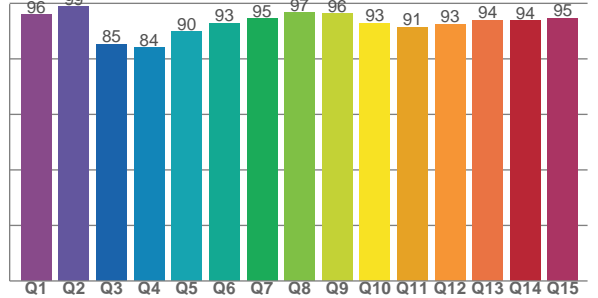
TM30 C values, 16 binned values out of total of 99 C values

C1	C2	C3	C4	C5	C6	C7	C8	C9	C10	C11	C12	C13	C14	C15	C16
91.4	94.2	91.4	92.1	90.8	96.6	95.6	92.7	89.9	84.0	81.6	92.3	92.9	92.9	84.2	95.1

CQS Q values

Q1	Q2	Q3	Q4	Q5	Q6	Q7	Q8	Q9	Q10	Q11	Q12	Q13	Q14	Q15
95.9	98.7	85.3	84.1	89.8	92.9	94.6	96.7	96.3	92.8	91.5	92.5	93.9	93.7	94.7

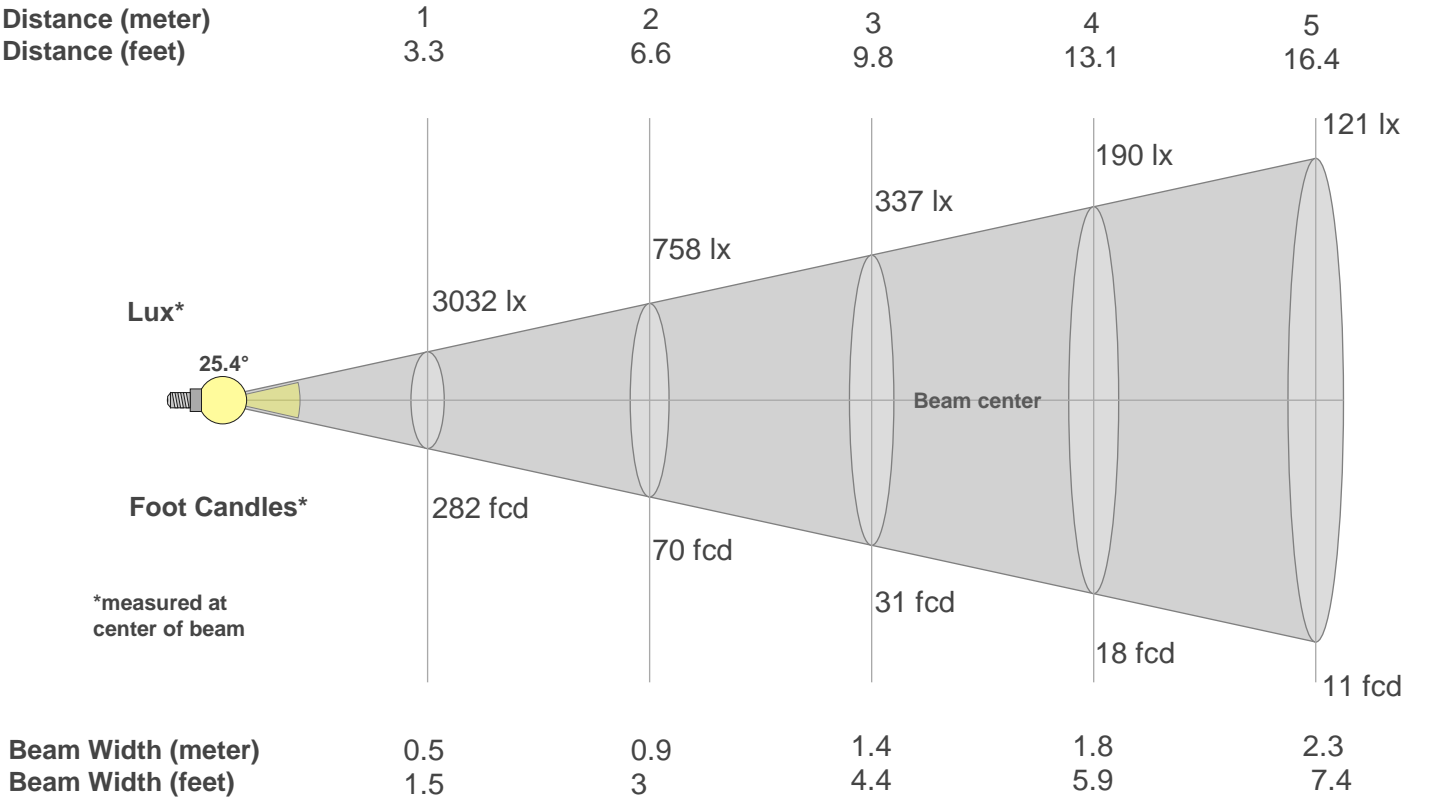
CQS: 91.9



Color Parameters

Color Temperature	Color Rendering Index	Red Component	Color Fidelity	Color Gamut	Color Quality Scale	Color Coordinate CIE 1931	Color Coordinate CIE 1931	Color Coordinate	Color Coordinate	Color Deviation from Black Body
CCT	CRI	CRI R9	TM30 Rf	TM30 Rg	CQS	x	y	u	v	Δuv
5755 K	94.5	81.9	90.9	99.9	91.9	0.327	0.338	0.204	0.317	-0.0023

Beam Details



Beam Intensities from 1-20m																				
m	1	2	3	4	5	6	7	8	9	10	11	12	13	14	15	16	17	18	19	20
ft	3.3	6.6	9.8	13.1	16.4	19.7	23	26.2	29.5	32.8	36.1	39.4	42.7	45.9	49.2	52.5	55.8	59.1	62.3	65.6
lx	3032	758	337	190	121	84	62	47	37	30	25	21	18	15	13	12	10	9	8	8
fcd	281.7	70.4	31.3	17.6	11.3	7.8	5.7	4.4	3.5	2.8	2.3	2	1.7	1.4	1.3	1.1	1	0.9	0.8	0.7

Intensities in 0° C-plane																			
0°	2°	4°	6°	8°	10°	12°	14°	16°	18°	20°	22°	24°	26°	28°	30°	32°	34°	36°	38°
3032	2923	2723	2460	2171	1882	1610	1367	1152	965	805	668	550	453	370	302	247	201	165	135
100%	96%	90%	81%	72%	62%	53%	45%	38%	32%	27%	22%	18%	15%	12%	10%	8%	7%	5%	4%

Intensities in 90° C-plane																				
0°	2°	4°	6°	8°	10°	12°	14°	16°	18°	20°	22°	24°	26°	28°	30°	32°	34°	36°	38°	
3032	2923	2723	2460	2171	1882	1610	1367	1152	965	805	668	550	453	370	302	247	201	165	135	
100%	96%	90%	81%	72%	62%	53%	45%	38%	32%	27%	22%	18%	15%	12%	10%	8%	7%	5%	4%	

Intensities in 180° C-plane																				
0°	2°	4°	6°	8°	10°	12°	14°	16°	18°	20°	22°	24°	26°	28°	30°	32°	34°	36°	38°	
3032	3026	2894	2657	2345	1992	1641	1314	1039	813	635	499	395	313	252	203	165	135	112	93	
100%	100%	95%	88%	77%	66%	54%	43%	34%	27%	21%	16%	13%	10%	8%	7%	5%	4%	4%	3%	

Intensities in 270° C-plane																				
0°	2°	4°	6°	8°	10°	12°	14°	16°	18°	20°	22°	24°	26°	28°	30°	32°	34°	36°	38°	
3032	3026	2894	2657	2345	1992	1641	1314	1039	813	635	499	395	313	252	203	165	135	112	93	
100%	100%	95%	88%	77%	66%	54%	43%	34%	27%	21%	16%	13%	10%	8%	7%	5%	4%	4%	3%	

Beam Angle 50%	Field Angle 10%	Cutoff Angle 2,5%	Intensity Ratio in 120° Cone	Intensity Ratio in 90° Cone
25.4°	56.2°	84.2°	98.5%	93.8%